

A.MIG-8300 - Katalog AMMO 2018



JadarHobby

Cena :
~~26,00 PLN~~
16,00 PLN

Producent : **AMMO of Mig Jimenez**
Dostępność : **Jest**
Stan magazynowy : **niski**
Średnia ocena : **brak recenzji**

A.MIG-8300 AMMO CATALOGUE 2018

132 strony w pełnym kolorze, druk na bardzo dobrym papierze. Opisano wszystkie produkty firmy AMMO.
Tekst angielski

Producent: **AMMO of Mig Jimenez** (Hiszpania)



JadarHobby

NEW 2017

1945 King Tiger

Panzerkampfwagen Tiger Ausf. B. Henschel Turret
A.MIG-8500



2 in 1
March 1945 Lead version
July 1945 Product

March 1945 model - Lead version
This version incorporated the last improvements that entered production with the turret completed by Wehrmacht in March 1945.

- Unlocked ring on the commander's cupola.
- Unlocked rear turret hatch.
- New hatches for the spare tracks model (eg. 1945/192) (in both view products).
- New 10 hatches for the turret side or hull attack bridge in camouflage.

The following modifications were added to the hull main:

- Unlocked jack and counter jack (30x).
- Loading on tracks on the rear engine deck to reduce the large grille opening.
- A few new facts for the driver and assistant gunner's hatch-gunner.
- Internal mechanical changes.

Prepared model July 1945 (8000) (C): 90th Infantry Division (IG, 1250 and 1st, 1.4, 1.6, 1.8, 1.10)

This version would have entered production in July 1945, including many improvements compared to the previous models.

- New 10 hatches (1.4 to 1.10) - large hatches, including designed for the new modified turret of the Tiger B.
- New turret engine hatch.
- New relative turret opening.
- A camouflage kit instead of a MG 38 on the glacis hull mount (not in all versions).
- For MG 38 in a new mount in place of the MG 38 on the turret MG used in the previous models.
- 10 hatches on MG 38 (not in all versions).



JadarHobby

Oilbrusher

Oil paint with fine brush applicator for modelling



The most useful range for modelling
21 different colors.

The new OILBRUSHER is the ultimate oil-based modelling paint, with a 100% oil-based formula that is easy to use and provides excellent coverage. It is designed for use on a wide range of surfaces, from plastic to metal, and is available in 21 different colors. The OILBRUSHER is the most useful range for modelling, with 21 different colors. It is designed for use on a wide range of surfaces, from plastic to metal, and is available in 21 different colors. The OILBRUSHER is the most useful range for modelling, with 21 different colors. It is designed for use on a wide range of surfaces, from plastic to metal, and is available in 21 different colors.

A.MIG-3100 BLACK	A.MIG-3101 WHITE	A.MIG-3102 AMMO YELLOW
A.MIG-3103 RED	A.MIG-3104 DARK BLUE	A.MIG-3105 OLIVE GREEN
A.MIG-3106 FIELD GREEN	A.MIG-3107 DARK GREEN	A.MIG-3108 DARK BLUE
A.MIG-3109 MEDIUM GREY	A.MIG-3110 BURN	A.MIG-3111 RED BROWN
A.MIG-3112 DARK BROWN	A.MIG-3113 DARKER BROWN	A.MIG-3114 SAND
A.MIG-3115 DARK	A.MIG-3116 DARK	A.MIG-3117 BURN
A.MIG-3118 DARK	A.MIG-3119 DARK	A.MIG-3120 DARK

JadarHobby

MUD & EARTH SETS
ACRYLIC EFFECTS

NEW 2017

A.MIG-F439
DAMP SOILS

For use on flat or shallow slopes in any model landscape.
Coverage: 10 cm.

A.MIG-F440
ARID & DUSTY SOILS

For use on flat or shallow slopes in any model landscape.
Coverage: 10 cm.

A.MIG-F441
CHURNED EARTH SOILS

For use on flat or shallow slopes in any model landscape.
Coverage: 10 cm.

A.MIG-F442
GLOSSY WET MUD SOILS

For use on flat or shallow slopes in any model landscape.
Coverage: 10 cm.

ACRYLIC MUD FOR DIORAMAS

NEW 2017

A.MIG-E100
ARID ERY GROUND

ARID

A.MIG-E101
DRY EARTH GROUND

ARID

A.MIG-E102
LIGHT EARTH GROUND

SOIL

A.MIG-E103
TURNED EARTH GROUND

SOIL

A.MIG-E104
DAMP WET GROUND

SOIL

A.MIG-E105
MUDDY GROUND

SOIL

JadarHobby

2017 | ANNO OF MIG GAMES | MUD & EARTH SETS

Primers
ACRYLIC PRIMERS

ONE SHOT

NEW 2017

PRIMER

A.MIG-2022
ONE SHOT PRIMER - WHITE

The white primer is used for highlighting and shading of white parts of the model. It is ideal for highlighting and shading of white parts of the model.

A.MIG-2023
ONE SHOT PRIMER - BLACK

The black primer is used for highlighting and shading of black parts of the model. It is ideal for highlighting and shading of black parts of the model.

A.MIG-2024
ONE SHOT PRIMER - GREY

The grey primer is used for highlighting and shading of grey parts of the model. It is ideal for highlighting and shading of grey parts of the model.

NEW Flesh Tones set

For acrylic colors selection. These colors are highly suitable to obtain every skin tone. 8 Tones included: 2 shadows, 2 middle and 2 for lighting. Formulated colors for brush and airbrush. Water soluble and non-toxic. Wash friendly.

NEW SET

Special Edition

ISRAELI DEFENSE FORCES

Exclusive limited edition with acrylic colors to paint the full Israeli defense force range of every time period. It includes, for the first time, 16 new color formulae of Israeli Defense Forces (IDF) and Israel Army (IAF) insignia as they are used in the IDF vehicles. Based on authentic and accurate samples, as they are in the field. IDF Green from the top panels. To include the Israeli special forces colored up. In acrylic highlights and special effects and also the use of the color used in realistic parts of IDF vehicles. This is the definition and the most complete for Israeli IDF forces that would be the maximum accuracy and those who want to make more less inaccuracies.

JadarHobby

2017 | ANNO OF MIG GAMES | ACRYLIC PRIMERS

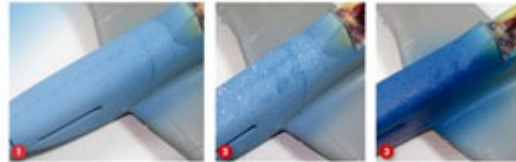
HOW TO MAKE STREAKING GRIME by Alexander Kutovenko



1. Make scratched surface. Using small brush (00 or 000) and Dark Brown Wash. Drawing random vertical lines from rear viewing angle. Don't use too long, thin, wide strokes. Try to make different lengths.

JadarHobby

CHIPPING WITH THE SALT TECHNIQUE by Javier López de Arco



1. The first step consists in applying the chipping fluid that will cause through the damaged base color and not until it is perfectly dry.
2. Next, the surface is treated with water and salt, and then the salt is washed away completely. In this operation, we can use a brush to remove some salt or distribute it in different patterns in our work.
3. Once the surface is dry and the salt has been washed away, we can use sandpaper for some parts, in the case a detail like.
4. We added a second base over the previous one using grey paint. It will be the final base color we were looking for.
5. Lastly, the only necessary thing to do is brush off the salt with a soft-bristled brush, slightly increased with water.

How to create a galvanized steel effect by Sergiusz Peccak



1. We washed a light coat of Red & White 101.
2. Then some shading is added with the same technique using Aluminium & Grey 104.
3. To create the zinc effect we will use different grey shades (grey & white) of Chipping in 000 104 and Aluminium & Grey 104 of different colors. They are applied with the sponge technique.
4. Lastly, and using a brush, we add some texture and air brush effects using Chipping in 000 104 and Aluminium & Grey 104 of different colors. These angles show and it is added to paint more realistic appearance in our models in a quick and realistic way. Happy modeling!

Collaborations

Collaboration with Takom models allows us to create new and interesting projects for our hobby. We have always been interested in the quality of our products and the accuracy of our models. We have always been interested in the quality of our products and the accuracy of our models. We have always been interested in the quality of our products and the accuracy of our models.



JadarHobby